



# Hygienic wall cladding systems

2026 product guide

One product family, one hygienic finish

TROVEX



## Contents

Overview	1
System components	2
Diamond wall cladding system	3 - 12
Resilience textured wall protection	13 - 20
Essence woodgrain wall cladding	21 - 26
Gallery bespoke printed wall cladding	25 - 30
Adhesive, sealants and cleaners	31
Tools and equipment	32
Glossary	33
Delivery	34
One product family, one hygienic finish	35 - 36
Contact us	37

We specialise in practical, attractive and innovative solutions for education, leisure and healthcare projects. Our mission is to enhance the world's interior surfaces through innovation and technology.

Committed to three core values - reliability, competence and care - we're known for our integrity and dedication. We listen to your challenges and work with you to provide a solution that exceeds your expectations every time.

With substantial experience of many market sectors, we have a comprehensive understanding in each one. We're able to address unique challenges and develop effective solutions for these. You can be confident that you'll receive dedicated, relevant customer care.

We have a UK warehouse with everything from sheet to colour matched trim, sealant and weld rod.



## System components

Available in a range of matching or complimentary colours for our wall cladding sheet range.

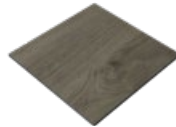
Diamond sheet:  
**Smooth**



Resilience sheet:  
**Textured**



Essence sheet:  
**Woodgrain**



Gallery sheet:  
**Printed**



Joint profile:  
**T200**



Edge profile:  
**T206**



Corner profile:  
**T203**  
\*white only



Weld rod:  
**TS306**



Transition profile:  
**T201**



External angle:  
**T205-E**  
\*white only



Internal angle:  
**T205-I**  
\*white only



Silicone sealant:  
**TS306**



See the Glossary on page 33 for an explanation of component use





## **Diamond** wall cladding system

Boasting extraordinary strength and resistance to impact, moisture and chemicals, Trovex Diamond is used to effectively clad walls and ceilings, providing a low-maintenance and hygienic surface.

It is the versatility of Trovex Diamond, as well as its impressive range of benefits, that makes it such a successful material. With a range of applications, addressing the most complex requirements, it is thermoformed around corners, married up with stainless-steel surfaces, and used to create ultra-hygienic products such as Hygipod IPS and Hygidoor. The tough, long-lasting surface is impervious to impact, spills and stains. Offering exceptional durability, this is an investment that gives returns, year after year.

The complete system includes colour matched trims and weld rod, adhesive and silicone.



## Diamond system benefits

We've formulated and developed the Diamond wall cladding system to be suited for all-round protection in environments that demand high hygiene standards.



### Durable

Diamond wall cladding is resistant to cracking and splitting. It provides excellent protection against abrasion to maintain a hygienic surface that is easy to clean.



### Hygienic

The smooth continuous surface is stain-resistant and very easy to wipe clean. It has great chemical resistance and can be cleaned with typical non-abrasive cleaning products and disinfectants.



### 20 year warranty

A 20 year warranty is offered across our range of Diamond wall cladding systems based on installation completed as per our installation instructions including full-coverage adhesives.



### Water resistant

Non-absorbent properties of Diamond provides a water resistant barrier to any substrate.



### Long-lasting

Diamond wall cladding systems have been formulated to have long-lasting colour brilliance minimising any fading or staining.



### Stocked for next day delivery

Wall cladding sheets, trim, sealants, weld rods and more are fully stocked in our UK warehouse ready for next day delivery or a pre-arranged delivery direct to site.

\*We endeavour to always hold stock, however stock levels can fluctuate when large orders are placed, so phone ahead before committing with a customer.

## Do you have any questions?

hello@trovex.com / 01707 254 170





Formulated for robustness, hygiene and brilliance

## White Satin

A clean white finish for environments prioritising hygiene and simplicity.

	Ref:	Size:
Diamond white sheets	<b>T10 / 25 / WHITE</b>	— <b>2500</b> x 1220 x 2.5 mm
	<b>T10 / 275 / WHITE</b>	— <b>2750</b> x 1220 x 2.5 mm
	<b>T10 / 30 / WHITE</b>	— <b>3000</b> x 1220 x 2.5 mm

### Joint profiles



<b>T200 / 25 / WHITE</b>	— <b>2500</b> mm	— 2-part
<b>T200 / 30 / WHITE</b>	— <b>3000</b> mm	— 2-part

### Transition profile



<b>T207 / 25 / WHITE</b>	— <b>2500</b> mm	— 2-part
--------------------------	------------------	----------

### Edge profiles



<b>T206 / 30 / WHITE</b>	— <b>3000</b> mm	— 2-part
--------------------------	------------------	----------

### Silicone sealant

<b>TS306 / WHITE</b>	— <b>310</b> ml
----------------------	-----------------

### Weld rod

<b>TWR / 80 / WHITE</b>	— <b>80</b> m
-------------------------	---------------

## White Satin

Additional trims available only in White Satin.

### Corner profiles



Ref:

Size:

**T203 / 25 / WHITE** — **2500** mm

**T203 / 30 / WHITE** — **3000** mm

### External angle



**T205 / 3025 / WHITE-E** — **3050** x 25 x 25 mm

**T205 / 3050 / WHITE-E** — **3050** x 50 x 50 mm

### Internal angle



**T205 / 3025 / WHITE-I** — **3050** x 25 x 25 mm

**T205 / 3050 / WHITE-I** — **3050** x 50 x 50 mm

## Ambience Satin

A range of satin serene colours carefully selected to introduce calming optimism into environments that otherwise may be stressful.

Ref:

Size:

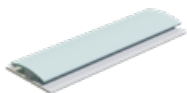
### Ambience sheets

**T10 / 25 / COLOUR** — **2500** x 1220 x 2.5 mm

**T10 / 30 / COLOUR** — **3000** x 1220 x 2.5 mm

### Joint profile

**T200 / 30 / COLOUR** — **3000** mm — 2-part



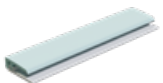
### Transition profile

**T207 / 25 / COLOUR** — **2500** mm — 2-part



### Edge profile

**T206 / 25 / COLOUR** — **2500** mm

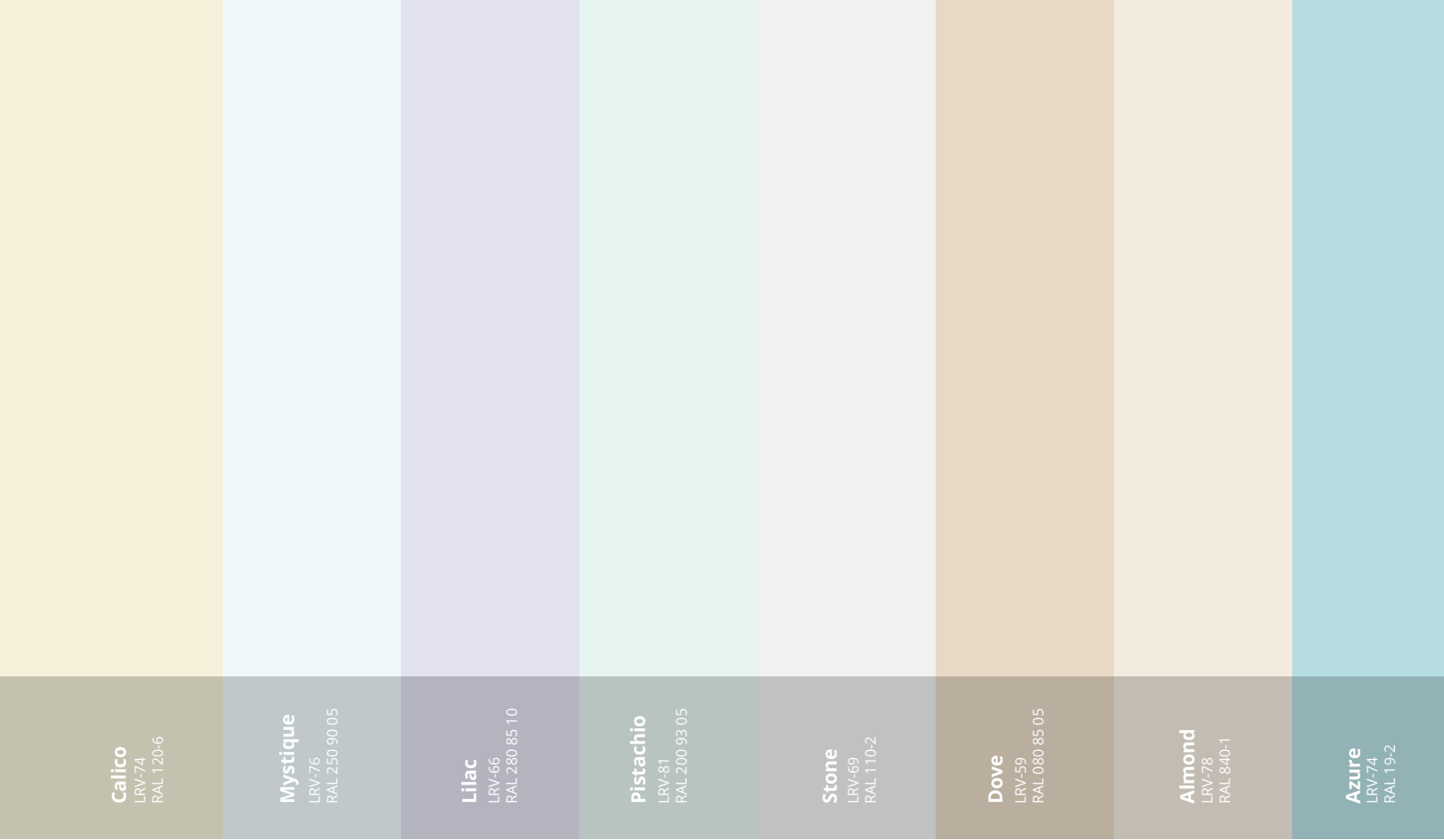


### Silicone sealant

**TS306 / COLOUR** — **310** ml

### Weld rod

**TWR / 80 / COLOUR** — **80** m



These colours are for reference only and will not be accurate due to printing processes outside of our control.  
RAL values are the closest equivalent. Please request a complimentary sample if accuracy is important.

**Request a free sample**

hello@trovex.com / 01707 254 170

## Radiance Satin

A range of refreshing colours selected to brighten and enhance spaces.

Ref:

Size:

### Radiance sheets

**T10 / 25 / COLOUR** — **2500** x 1220 x 2.5 mm

**T10 / 30 / COLOUR** — **3000** x 1220 x 2.5 mm

### Joint profile

**T200 / 30 / COLOUR** — **3000** mm — 2-part



### Transition profile

**T207 / 25 / COLOUR** — **2500** mm — 2-part



### Edge profile

**T206 / 25 / COLOUR** — **2500** mm



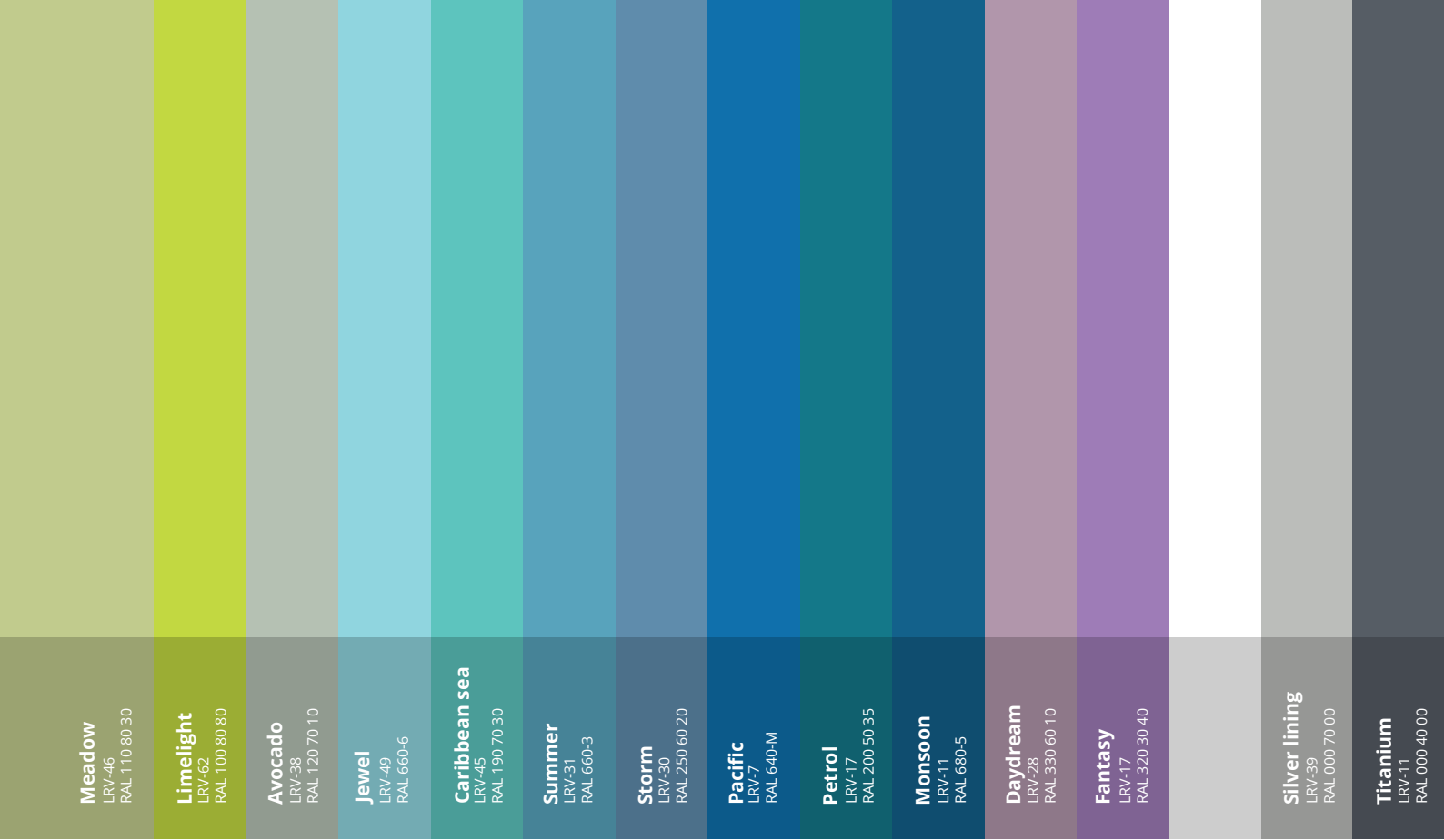
### Silicone sealant

**TS306 / COLOUR** — **310** ml

### Weld rod

**TWR / 80 / COLOUR** — **80** m





**Meadow**  
LRV-46  
RAL 110 80 30

**Limelight**  
LRV-62  
RAL 100 80 80

**Avocado**  
LRV-38  
RAL 120 70 10

**Jewel**  
LRV-49  
RAL 660-6

**Caribbean sea**  
LRV-45  
RAL 190 70 30

**Summer**  
LRV-31  
RAL 660-3

**Storm**  
LRV-30  
RAL 250 60 20

**Pacific**  
LRV-7  
RAL 640-M

**Petrol**  
LRV-17  
RAL 200 50 35

**Monsoon**  
LRV-11  
RAL 680-5

**Daydream**  
LRV-28  
RAL 330 60 10

**Fantasy**  
LRV-17  
RAL 320 30 40

**Silver lining**  
LRV-39  
RAL 000 70 00

**Titanium**  
LRV-11  
RAL 000 40 00

These colours are for reference only and will not be accurate due to printing processes outside of our control.  
RAL values are the closest equivalent. Please request a complimentary sample if accuracy is important.

**Request a free sample**

hello@trovex.com / 01707 254 170



## **Resilience** wall cladding system

In high-traffic areas, walls face the relentless challenge of impacts, scratches, and constant wear. Resilience is not just a protective layer; it's a resilient shield. With a lightly embossed finish, each panel is an armour against the daily rigours, offering a surface that resists the scuffs and marks, whilst also still being hygienic.

With a variety of colours to choose from, whether you want something subtle or bold, our Resilience fits right in. It's perfect for high-traffic areas in hospitals, restaurants, schools, and offices, where lots of people come and go. Easy to clean and maintain, it's a practical choice for keeping spaces neat and tidy.

Resilience has matching Diamond finishes available, meaning sheet, trim, weld rod and sealant can be coordinated.

## Resilience system benefits

We've formulated and designed the Resilience wall cladding to be extra robust without compromising its hygienic performance thanks to its light embossing



### Extra Durable

Resilience wall cladding is enhanced with a light emboss, increasing its resilience to scruffs and scratches through impact in high traffic areas.



### Hygienic

The lightly embossed continuous surface is stain-resistant and very easy to wipe clean. It has great chemical resistance and can be cleaned with typical non-abrasive cleaning products and disinfectants.



### 20 year warranty

A 20 year warranty is offered across our range of Diamond wall cladding systems based on installation completed as per our installation instructions including full-coverage adhesives.



### Water resistant

Non-absorbent properties of Diamond provides a water resistant barrier to any substrate.



### Long-lasting

Resilience cladding systems have been formulated to have long-lasting colour brilliance minimising any fading or staining.



### Stocked for next day delivery

Wall cladding sheets, trim, sealants, weld rods and more are fully stocked in our UK warehouse ready for next day delivery or a pre-arranged delivery direct to site.

\*We endeavour to always hold stock, however stock levels can fluctuate when large orders are placed, so phone ahead before committing with a customer.

### Do you have any questions?

hello@trovex.com / 01707 254 170





Formulated for extra robustness and hygiene

## Resilience Textured wall protection

A diverse range of colours enhanced with a texture to add extra resilience to impact.

Ref:

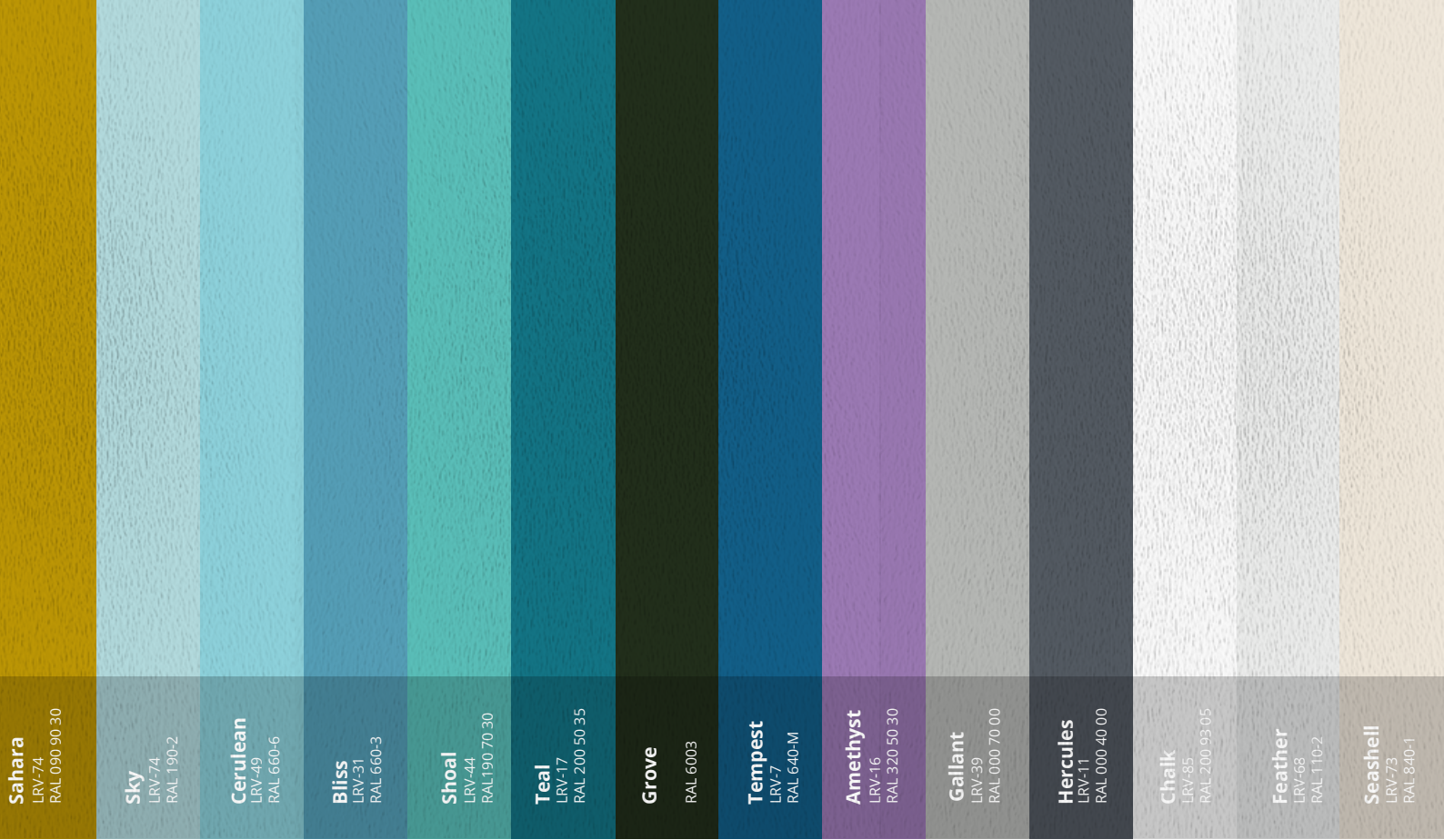
Size:

**Resilience sheet**    **T10 / 24 / COLOUR** — **2440** x 1220 x 2 mm

For colour matched trim, sealant and weld rod please match the Resilience finish with the Diamond equivalent.  
These are the same colour and are suitable to be used with Resilience sheet.

Resilience	Diamond
Sky	Azure
Cerulean	Summer
Bliss	Jewel
Shoal	Caribbean sea
Teal	Petrol
Tempest	Pacific
Amethyst	Fantasy
Gallant	Silver lining
Hercules	Titanium
Chalk	White
Feather	Stone
Seashell	Almond





These colours are for reference only and will not be accurate due to printing processes outside of our control.  
RAL values are the closest equivalent. Please request a complimentary sample if accuracy is important.

**Request a free sample**

hello@trovex.com / 01707 254 170





## Essence woodgrain wall cladding

This exquisite range of wall cladding brings the timeless allure of woodgrain to your spaces, while offering the practical benefits of high-grade PVC. Each panel is crafted to mimic the intricate patterns and warm tones of real wood, creating a naturally beautiful environment.

Embrace the natural beauty and practicality of Essence. It offers an authentic wood appearance that adds organic sophistication to any space, crafted from robust PVC for exceptional durability against moisture and wear. This low-maintenance solution frees you from the hassles of staining and sealing, ensuring your walls remain effortlessly stunning. Whether in a modern office or healthcare environment, 'Essence' provides versatile application options. Plus, its lightweight panels ensure quick and easy installation, allowing for a swift transformation of your space. You get the perfect combination of elegance, durability, and ease.

### Did you know?

The Trovex range of fire-rated doorsets, integrated plumbing systems and bed head trunking is wrapped in the same material.

## Essence woodgrain benefits

We've carefully curated a range of woodgrain finishes that will enhance any environment with the natural beauty of woodgrain but the simplicity of a modern PVC finish.



### Durable

Essence wall is resistant to cracking, splitting and is water resistant. It provides excellent protection against abrasion to maintain a hygienic surface that is easy to clean.



### Hygienic

The continuous thermoformable surface is stain-resistant and very easy to wipe clean. It has great chemical resistance and can be cleaned with typical non-abrasive cleaning products and disinfectants.



### 20 year warranty

A 20 year warranty is offered across our range of Diamond wall cladding systems based on installation completed as per our installation instructions including full-coverage adhesives.



### Versatile

Thanks to the non-clinical appearance of Essence, it can be used in many spaces to enhance both appearance and hygiene.



### Long-lasting

Unlike real woodgrain panels there is no need to seal or stain the material. From installation it will maintain its appearance for many years to come.



### Stocked for next day delivery

Wall cladding sheets, trim, sealants, weld rods and more are fully stocked in our UK warehouse ready for next day delivery or a pre-arranged delivery direct to site.

\*We endeavour to always hold stock, however stock levels can fluctuate when large orders are placed, so phone ahead before committing with a customer.

## Do you have any questions?

hello@trovex.com / 01707 254 170



Formulated for robustness, hygiene & appearance

## Essence Woodgrain

Bring the beauty of nature inside with our range of satin woodgrain finishes.


Ref:

Size:

**Essence sheet**    **T10 / 24 / COLOUR** — **2440** x 1220 x 2.5 mm

**i** Trovex do not offer matching trim, silicone or weld rod for the Essence range. Depending on where the finish is being installed and how hygienically sensitive the area is, customers may choose to use a silicone join between sheets or a simple butt join.



A series of seven vertical wood finish color swatches. From left to right: 1. Light maple with a vertical grain pattern. 2. Warm beech with a vertical grain pattern. 3. Majestic oak with a vertical grain pattern. 4. Urban oak with a vertical grain pattern. 5. Dark Walnut with a vertical grain pattern. 6. Fine Walnut with a vertical grain pattern. 7. Peacan with a vertical grain pattern.

**Fresh maple**  
LRV-49

**Warm beech**  
LRV-42

**Majestic oak**  
LRV-29

**Urban oak**  
LRV-38

MOQ required  
**Dark Walnut**

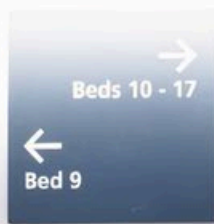
MOQ required  
**Fine Walnut**

MOQ required  
**Peacan**

These colours are for reference only and will not be accurate due to printing processes outside of our control.  
RAL values are the closest equivalent. Please request a complimentary sample if accuracy is important.

**Request a free sample**

hello@trovex.com / 01707 254 170



## Gallery printed wall cladding



**i** Gallery is made up of three layers, the base being Trovex Diamond PVC sheet, then the printed image and specialist protective film.

With Gallery, the walls around you become more than just structures—they become canvases of inspiration. Embrace the blend of artistic expression and practical functionality. Gallery will redefine your space.

Gallery is your go-to for transforming any space with a touch of creativity and practicality. Our advanced printing brings every design to life, from vibrant illustrations for children's wards to elegant corporate landscapes, ensuring each detail shines. Not just a pretty face, our PVC cladding is tough, easy to clean, and perfect for busy spots like hospitals and schools. It's all about changing the vibe of a place, whether it's cheering up a classroom or bringing calm to a clinic. Plus, for businesses looking to make a mark, Gallery's customised wall art is a brilliant way to showcase your brand and leave a lasting impression.

For the imagery or illustrations, stock art can be purchased or freelancers commissioned.

## Gallery wall cladding benefits

We've formulated and developed the Gallery wall cladding system to enable customers to enhance environments using images or illustrations without compromising on hygiene.



### Durable

Printed onto our Diamond PVC and then protected with a specialist film for additional resilience, Gallery is resistant to scratches and scuffs.



### Hygienic

The smooth continuous surface is stain-resistant and very easy to wipe clean. It has great chemical resistance and can be cleaned with typical non-abrasive cleaning products and disinfectants.



### 20 year warranty

A 20 year warranty is offered across our range of Diamond wall cladding systems based on installation completed as per our installation instructions including full-coverage adhesives.



### Water resistant

Non-absorbent properties of Diamond provides a water resistant barrier to any substrate.



### Long-lasting

Gallery wall cladding systems have been formulated to have long-lasting colour brilliance minimising any fading or staining.



### 2-3 week lead time

Diamond PVC is stocked and the printing of Gallery wall cladding takes place at our Norfolk manufacturing site.

### Do you have any questions?

hello@trovex.com / 01707 254 170



TROVEX

Formulated for durability, beauty and hygiene

## Gallery

Print PVC wall cladding laminated with a hard-wearing scratch-resistant coating for protection.

Ref:

Size:

**Gallery sheet**    **T10 / 14** ————— **2440** x 1220 x 2.5

### How to order Gallery

Required info:

- Size of the wall
- High quality artwork
- Preferred delivery date

To ensure the image looks its best, supplied artwork must be a minimum of 150 dpi (ideally 400 dpi) when used actual size. The colour ideally needs to be set to CMYK. Accepted formats are JPEG, TIFF, PDF, SVG, EPS, PSD and PNG.

1. Send the artwork in a high resolution format and the dimensions of the wall area.
2. We will return a proof, showing how the sections of the image will be printed along with an Order Acknowledgment.
3. Confirm the design meets expectations by signing the Order Acknowledgement and returning it to us.
4. The Trovex Gallery product will be delivered as per the dates on the Order Acknowledgement.

Trovex reserves the right to refuse printing of inappropriate or low resolution images.

- i** Trovex do not offer matching trim, silicone or weld rod for the Essence range. Depending on where the finish is being installed and how hygienically sensitive the area is, customers may choose to use a silicone join between sheets or a simple butt join.

### Do you have any questions?

hello@trovex.com / 01707 254 170





This image is for reference only and will not be accurate due to printing processes outside of our control.  
Please request a complimentary sample if accuracy is important see the quality of Gallery.

**Request a free sample**

hello@trovex.com / 01707 254 170

## Adhesives, sealants and cleaners

Essentials for effectively installing our range of wall cladding.

	Ref:	Size:
<b>Adhesive</b>	<b>TB300 / 25</b> _____	<b>6.5</b> kg
	<b>TB300 / 30</b> _____	<b>8.0</b> kg
	6.5kg for 2800 mm sheets or 8kg for 3000 mm sheets.	
<b>Butyl tape</b>	<b>TB304 / 30</b> _____	<b>30</b> m
<b>Welding underlay tape</b>	<b>TB305 / 40</b> _____	<b>40</b> m
<b>Primer</b>	<b>TB311 / 50</b> _____	<b>500</b> ml
<b>Silicone spray</b>	<b>TB310 / 500</b> _____	<b>500</b> ml
<b>Clear seal silicone</b>	<b>TS306 / CLEAR</b> _____	<b>310</b> ml
	For colour seal silicones please see individual colour range.	
<b>Antistatic cleaner</b>	<b>T307 / 75</b> _____	<b>750</b> ml
<b>Cleaner/thinner</b>	<b>T308 / 10</b> _____	<b>1</b> Ltr
	<b>T308 / 50</b> _____	<b>5</b> Ltr



## Tools and equipment

Selection of premium quality tools for wall cladding installation.

	Ref:	Size:
Mixing paddle	T800	
Notched trowel	T7801	6 mm
Scraper	T803	75 mm
Rubber mallet	T809	
Skeleton gun	T811	
Panel roller	T816	
Thermoformer	THF30	3000 mm
Welding gun	T819 / HG23	
Round nozzle	T820	
Welding nozzle	T821	
Trimming knife	T823	
Spare blade	T824	



## Glossary

**Sheet:** A sheet of PVC material used to cover and protect walls, providing both aesthetic and functional benefits.

**Joint profile:** A 2-part system to join two wall cladding sheets, ensuring a smooth and continuous appearance.

**Edge profile:** A two-part system designed to neatly finish and protect the edges of a wall cladding sheet.

**Corner profile:** A profile used to cover and protect the corners where wall cladding sheets meet, ensuring a neat finish.

**Transition profile:** Used for creating a smooth transition between wall cladding and flooring, enhancing both aesthetics and safety.

**External angle:** A profile designed for connecting two wall cladding sheets at an external corner, providing a clean and angled join.

**Internal angle:** Used to join two wall cladding sheets in an internal corner, ensuring a neat and tidy angle.

**Weld rod:** A rod of PVC material used in the welding process to fuse cladding sheets together, creating a strong and seamless join.

**Silicone sealant:** A flexible, waterproof sealing material used to seal joints and edges in wall cladding, preventing moisture penetration and ensuring hygiene.

**Satin finish:** A wall cladding finish that offers a subtle sheen, less reflective than gloss, providing a sophisticated and contemporary look.

**Gloss finish:** A reflective, shiny finish on wall cladding that brightens spaces and is easy to clean.

**Woodgrain finish:** A wall cladding finish that mimics the look of wood, adding a natural and warm aesthetic to the cladding.

**Wall cladding:** A smooth wall cladding sheet for entire wall finishes that creates a hygienic and water resistant surface.

**Wall protection:** A textured wall cladding sheet for enhanced protection that is resistant to scratches and scuffs.

## Deliveries nationwide

We have over Project Consultants nationwide ready to support you. At our two main facilities we have approaching one hundred staff. We have the facilities and expertise to support you regardless of size or complexity of the project.

Next-day delivery is available on all orders except for those that require our Gallery printing service, where we quote 2-3 lead time.

Majority of deliveries are direct to site with dedicated transport.

Contact us today on **01707 254 170** or email [hello@trovex.com](mailto:hello@trovex.com)





## One product family, One hygienic finish

Discover the complete Trovex range  
of products for hygiene focused spaces.

Hygidoor ●

● Diamond

● Resilience

● Hygipod IPS

Hygipod MSU ●

## Hygidoor

Highly configurable PVC wrapped fire-rated door and frame, that is quick to install and is designed to be hygienic and robust for high traffic healthcare environments.



- 1. Hygienic PVC finish    2. Thermoformed edges    3. Flush vision panels
- 4. Triple glazed vision panels    5. Goal-post frame system

Available in either non-fire rated, FD30, FD60 and lead line in double, single, leaf-and-a-half and bi-fold configurations. Frames and leading edges can be different to leaf colour.



Discover more at  
[trovex.com/hygidoor](https://trovex.com/hygidoor)

## Hygipod IPS

IPS that is pre-plumbed with sanitaryware, quick to install and hygienic. Available in many configurations including scrub, DOC M packages and more.



- 1. Thermoformed edges w/ minimal joins    2. Hinged, lockable, access doors
- 3. Pre-plumbed sanitaryware    4. Hygienic PVC finish    5. Plinth system

Available in various configurations including but not limited to clinical wash hand basin, scrub, sluice, shower, WC and more. Chimney breast, flat and sloping top form factors.



Discover more at  
[trovex.com/hygipod-ips](https://trovex.com/hygipod-ips)

## Hygipod MSU

Modular and configurable modern bed head trunking designed to speed-up ward construction, be hygienic and deliver bed head services.



- 1. Secure, hinged, customisable doors    2. Pre-installed gas terminals / pipes
- 3. Thermoformed edges    4. Hygienic PVC finish    5. Mount accessories

Available in either a suspended or plinth version. Configurable services include power, data, nurse call systems and more.



Discover more at  
[trovex.com/hygipod-msu](https://trovex.com/hygipod-msu)

## Get in touch

We want to contribute to the success of your future projects. Our dedicated Project Consultants are available to discuss how Trovex can work best for you.

For further information, product recommendations or technical advice on any Trovex product please get in touch today.

hello@trovex.com  
01707 254 170

Trovex.com

